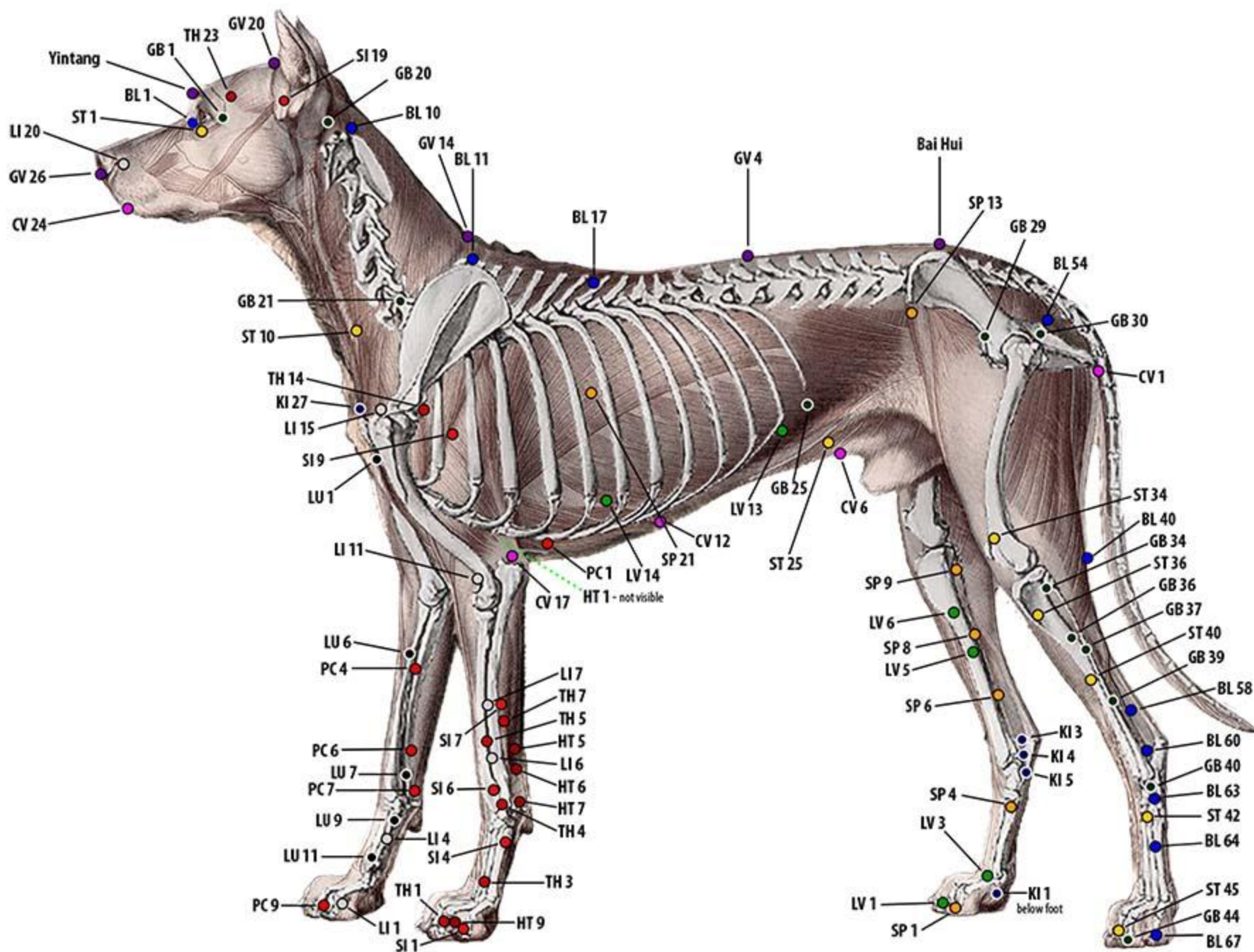




PTI PRINCIPAL PHOTOPUNCTURE POINTS FOR DOGS & CATS

AUTHOR: KAY AUBREY-CHIMENE, RMT, CPTI, CLTI
PHOTONIC THERAPY INSTITUTE

Canine Principal Photopuncture Points - ALL



Principal Photopuncture Points - Quick Reference Guide

Element	METAL		EARTH		FIRE (flames)		WATER		FIRE (coals)		WOOD		EX VESSELS	
Meridian	LU	LI	ST	SP	HT	SI	BL	KI	PC	TH	GB	LV	GV	CV
# of Points	11	20	45	21	9	19	67	27	9	23	44	14	28	24
Yin/Yang	Yin	Yang	Yang	Yin	Yin	Yang	Yang	Yin	Yin	Yang	Yang	Yin	Yang	Yin
Affects	Skin/Hair		Muscles/Tissue		Vascular		Bone/Marrow		Vascular/Lymph		Sinews		Nervous System	
Opens To	Nose		Mouth		Tongue		Genitals		Tongue		Eyes		Anus	
Time of Influence	3-5A	5-7A	7-9A	9-11A	11A-1P	1-3P	3-5P	5-7P	7-9P	9-11P	11P-1A	1-3A		
Emotion	Grief		Worry		Joy/Depression		Fear		Contentment		Anger			
Connecting	7	6	40	4	5	7	58	4	6	5	37	5	1	15
SuperCharger	6	7	34	8	6	6	63	5	4	7	36	6		
Association	BL 13	BL 25	BL 21	BL 20	BL 15	BL 27	BL 28	BL 23	BL 14	BL 22	BL 19	BL 18	BL 16	
Source	9	4	42	3	7	4	64	3	7	4	40	3		

Master Points

6 points that control an AREA of the body

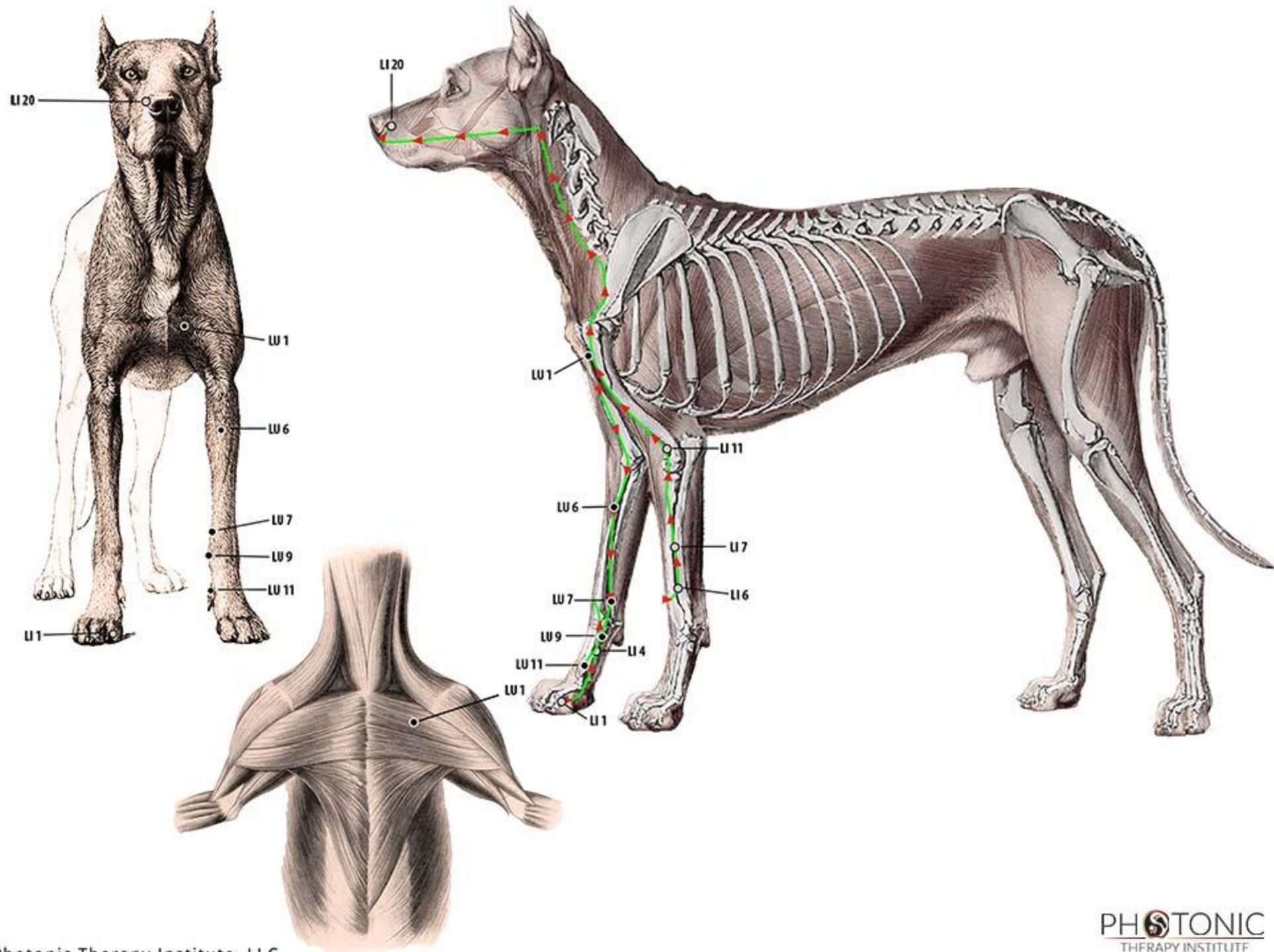
LU 7 Head & Neck	LI 4 Face & Mouth	ST 36 Upper Abdomen Energy
SP 6 Lower Abdomen Urogenital	BL 40 Lower Back	PC 6 Heart, Chest Upper Back

Influential Points

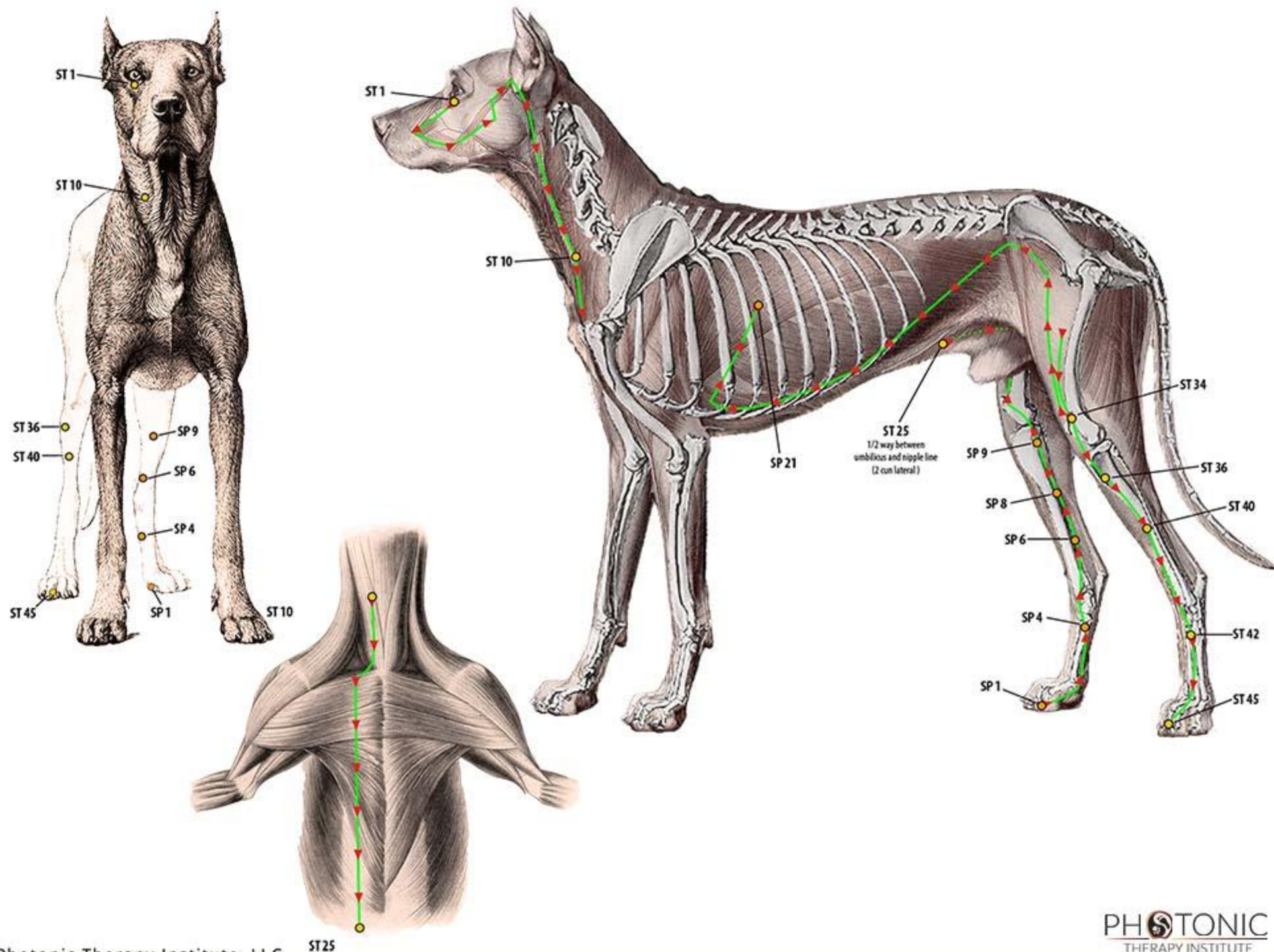
8 points that influence a body FUNCTION

LU 9 Blood Vessels, Circulation	BL 17 Blood	GB 39 Brain, Bone Marrow Spinal Cord	CV 12 Hollow Organs
BL 11 Bone	GB 34 Muscles, Tendons Pain	LV 13 Solid Organs	CV 17 Energy Respiration

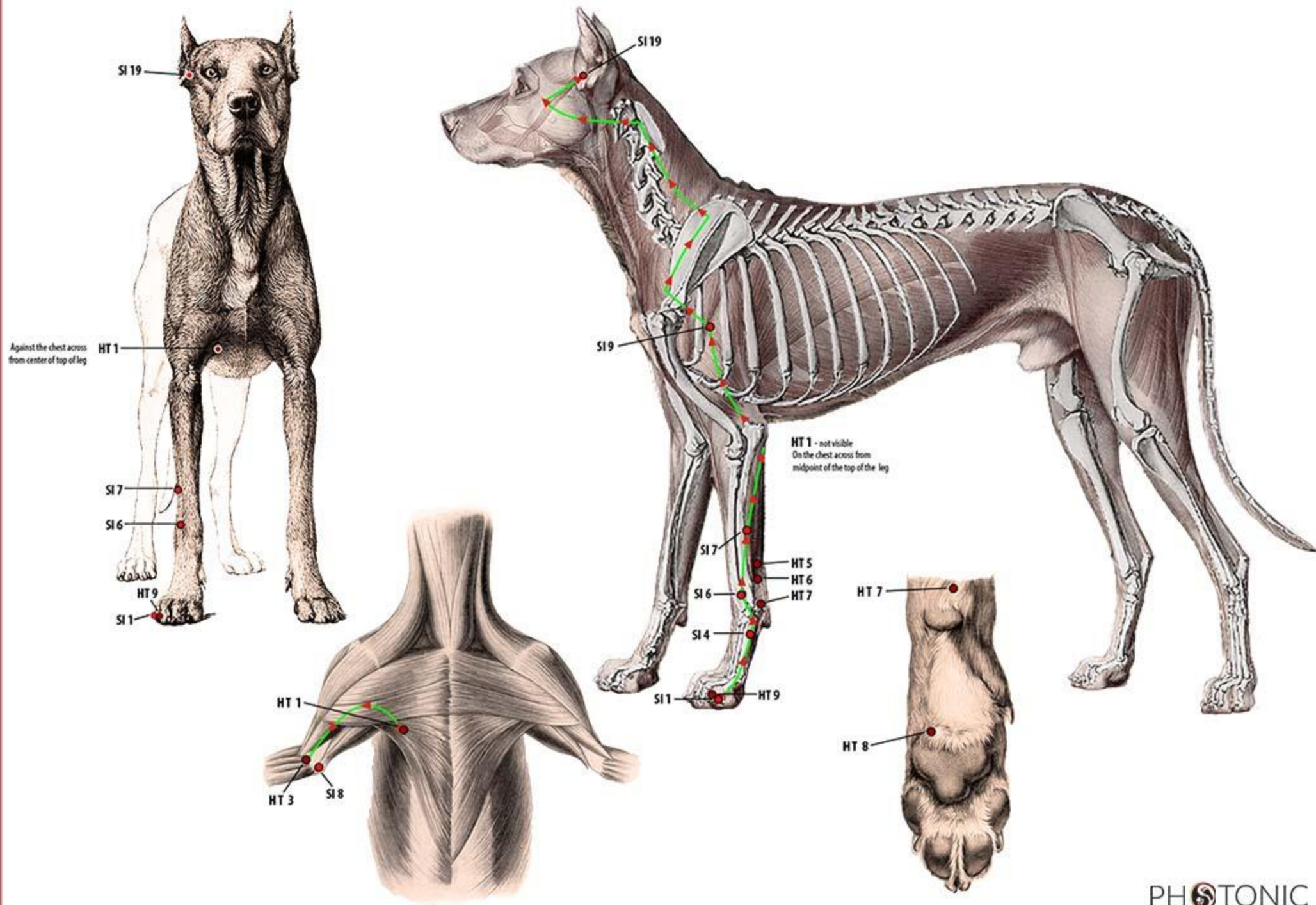
Principal Canine Photopuncture Points - METAL



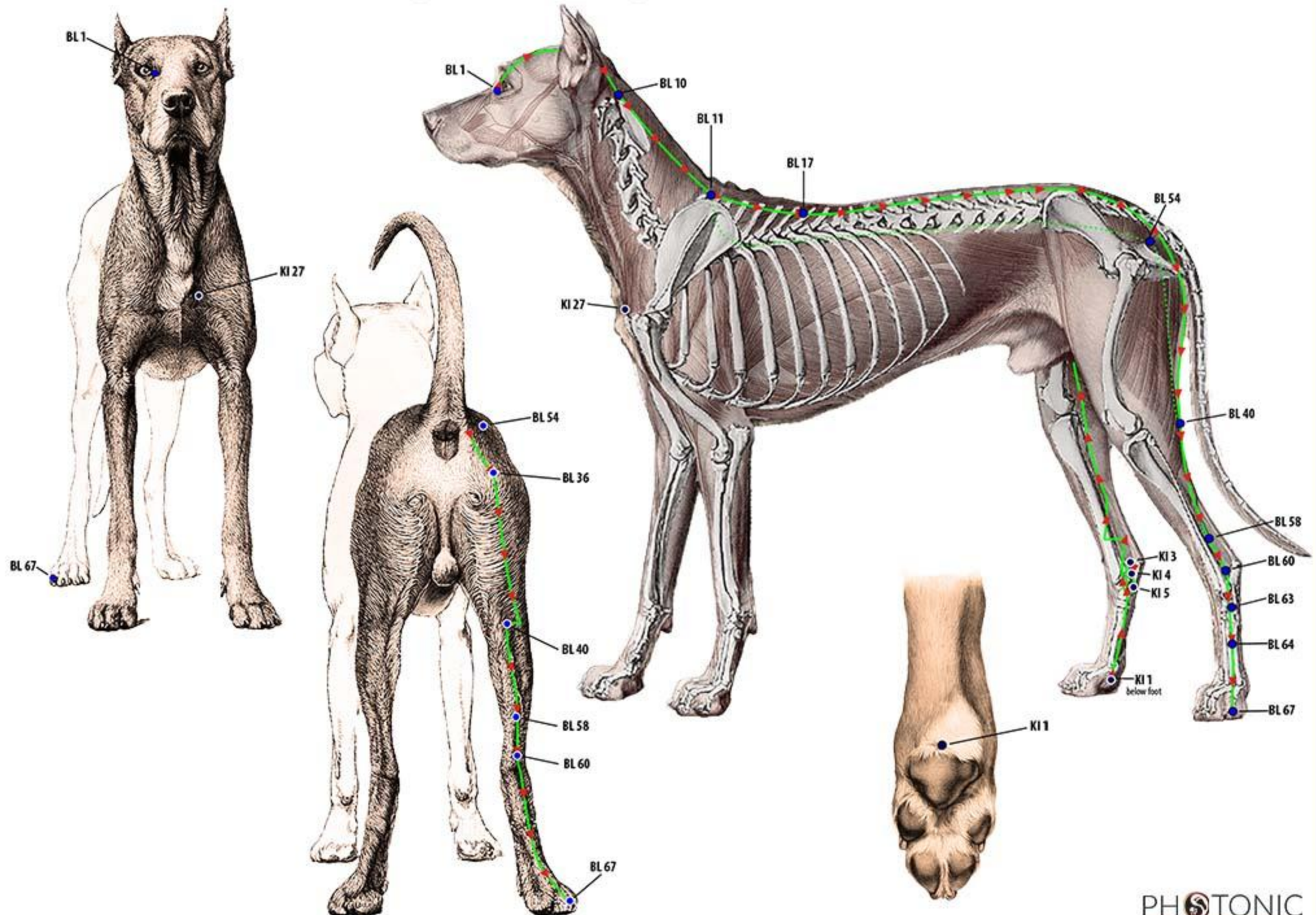
Principal Canine Photopuncture Points - EARTH



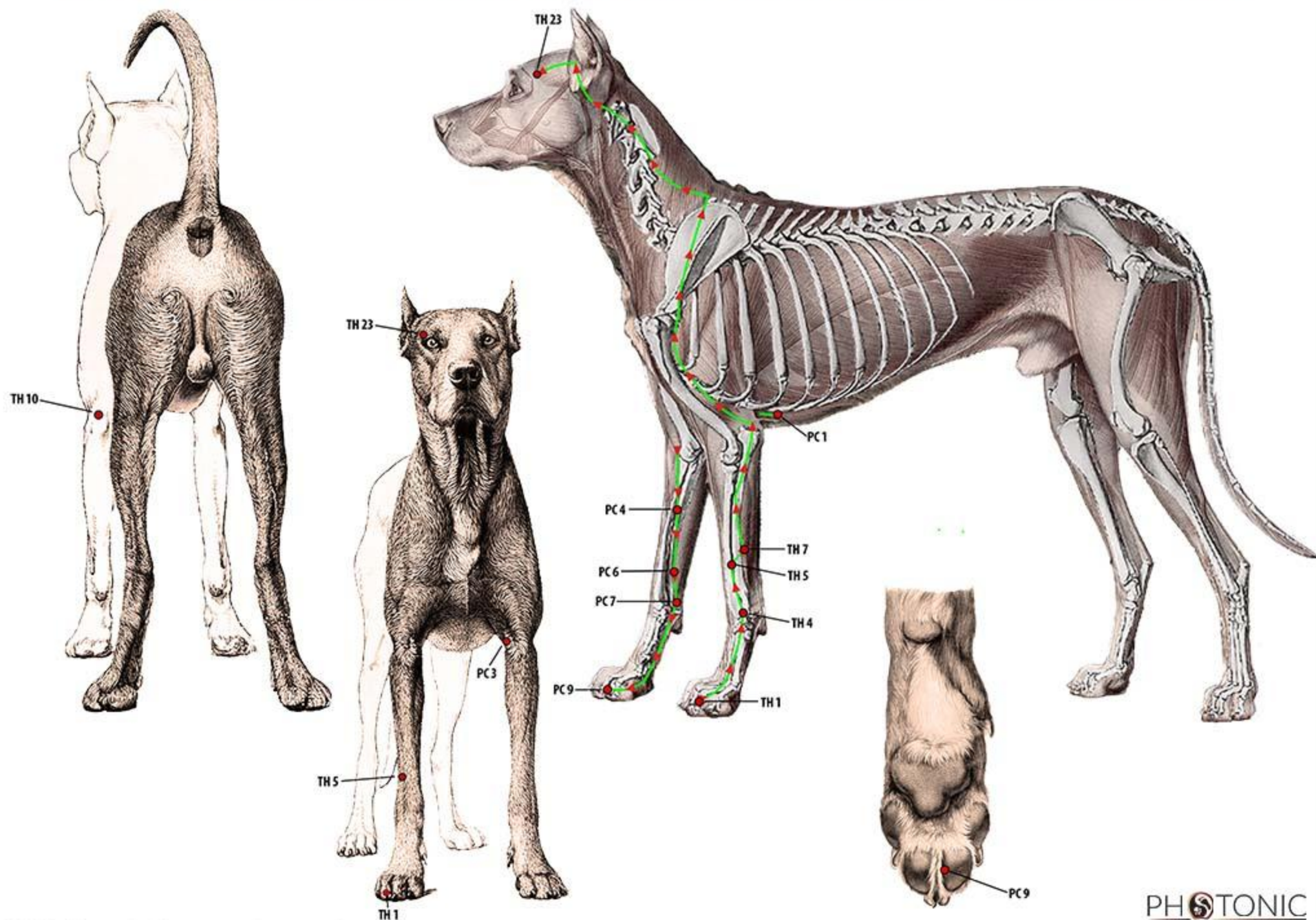
Principal Photopuncture Points - FIRE (flames)



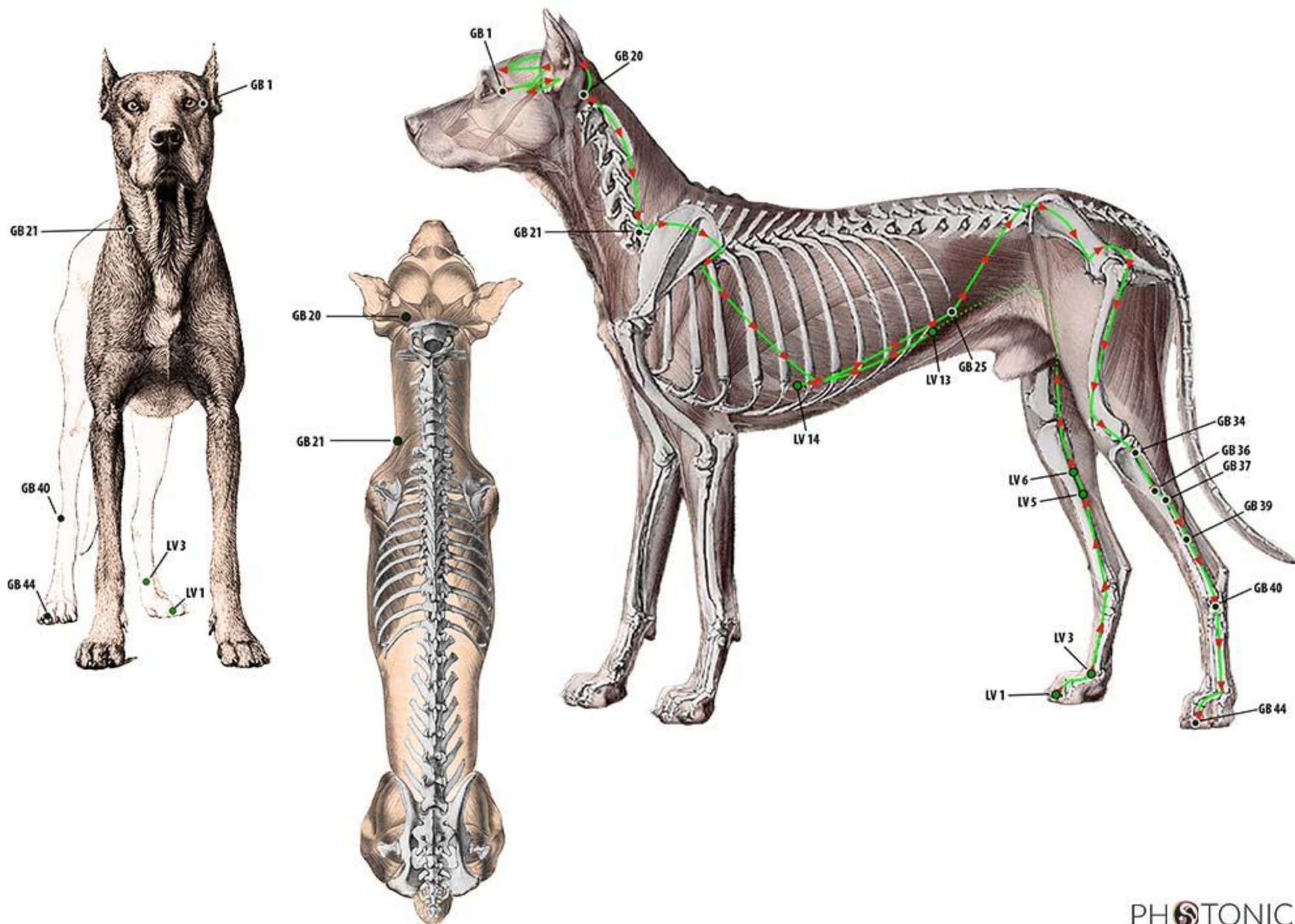
Canine Principal Photopuncture Points - WATER



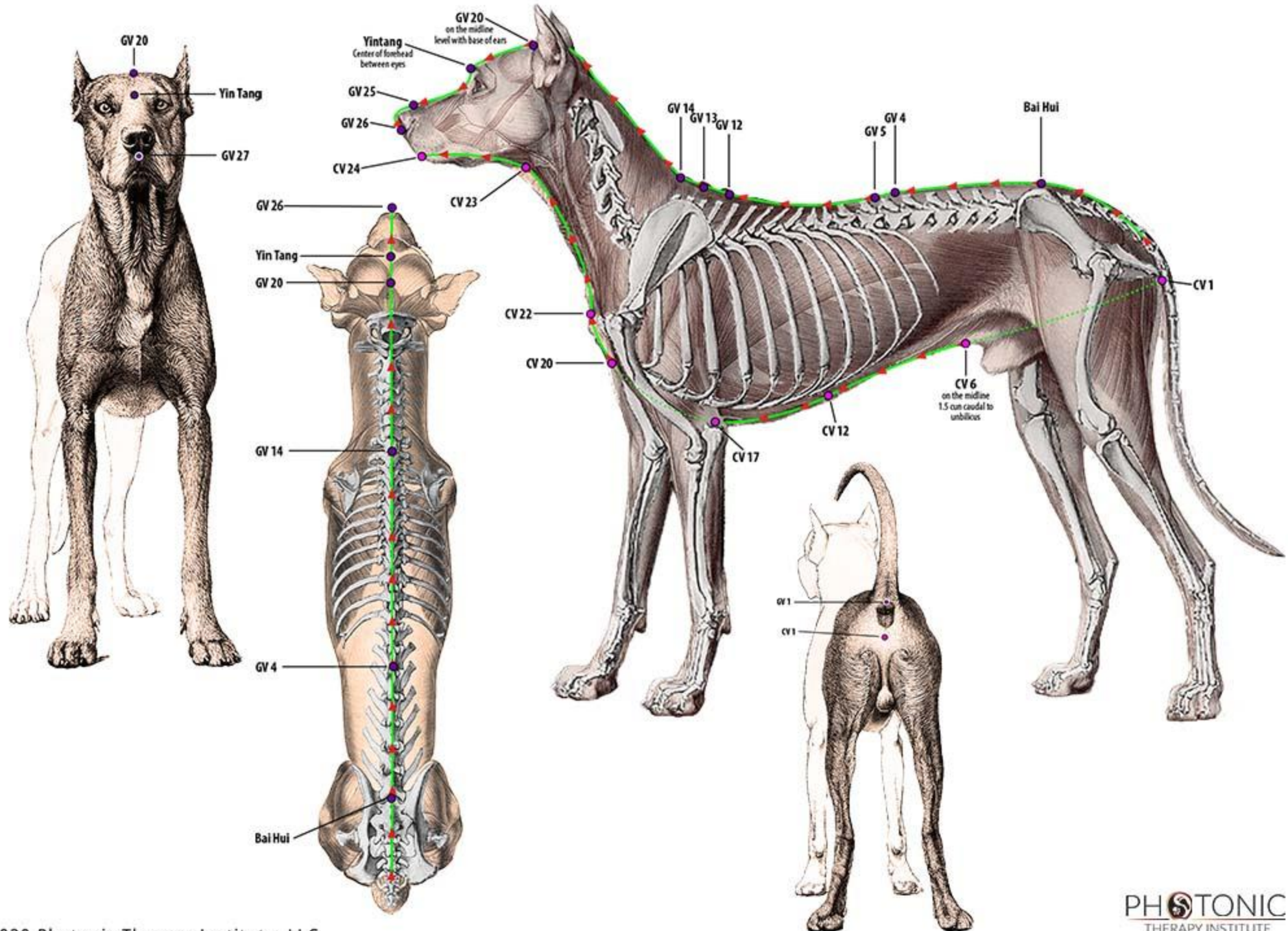
Canine Principal Photopuncture Points - FIRE (coals)



Canine Principal Photopuncture Points - WOOD



Canine Principal Photopuncture Points - EX. VESSELS



Canine Principal Photopuncture Points List

Lung	Indications	Location
LU 1	Respiratory disorders, allergies. Useful for all LU Issues, especially of Excess Type - cough, wheezing, asthma.	Between the 1 st and 2 nd rib, medial to the humerus. In the depression in the center of the descending portion of the superficial pectoralis (chest) muscle.
LU 6	SuperCharger Point - bleeding and pain along the Lung Meridian	On the inside of the front leg. Approximately equal distance between the elbow and the carpus (wrist).
LU 7	Master Point for Head & Neck - bronchitis, allergies, phlegm, cough, asthma	On the inside of the front leg. Above the carpus (wrist) in the groove near the end of the forearm bones.
LU 9	Influential Point for Blood Vessels, Pulse, & Circulation – coughing, difficulty breathing, wrist pain.	On the inside of the front leg. In the carpus (wrist) joint.
LU 11	Emergency Point. Allergies, Lung inflammation, nasal discharge, cough, difficulty breathing, loss of consciousness.	On the inside of the front leg. On the inside of the nail bed of the dew claw – or ½ the distance from wrist (carpus) to top of paw.

Large Intestine	Indications	Location
LI 1	Eye and ear pain and inflammation, toothache. Cardiopulmonary emergencies, convulsion due to high fever.	Inside (medial) edge of 2 nd toenail of the forepaw.
LI 4	Master Point - Face and Mouth. Any facial issues, allergies, dental issues, headache, sweating, chronic pain	In the depression between the 1st (dewclaw) and 2nd metacarpal bones, approximately in the middle of the 2nd metacarpal bone on the radial side.
LI 6	Connecting Point for METAL. Acute inflammation of the eye.	On the craniolateral surface of the foreleg, in the muscle groove 1/4 of the distance up from the carpus (wrist).

LI 7	SuperCharger Point - bleeding and pain along the Large Intestine Meridian.	On the craniolateral surface of the foreleg, in the muscle groove on the front of the leg, 1/2 of the distance up from the carpus (wrist).
LI 11	Fever, hives, skin disease, acne, diarrhea, elbow pain, arthritis of the shoulder and/or elbow.	In the lateral end of the cubital crease of the elbow.
LI 20	Loss of smell, crooked mouth, nosebleed, sinus headache, trigeminal neuralgia	On the widest edge of the nose, next to the highest part of the nasal labial groove.

Stomach	Indications	Location
ST 1	Any eye issue: excessive tearing, redness, dryness, painful or itchy eyes, twitching of the eyelids. Digestive Issues.	Directly below the center of the pupil on the upper side orbit bone.
ST 10	Sore throat, shortness of breath, stiff or painful neck rotation, enervation of the vagus nerve	1/2 of the distance between the base of the jaw to the shoulder in the groove between the lateral neck muscles.
ST 25	Abdominal pain, constipation/diarrhea, menstruation issues, edema, colitis, pancreatitis. DO NOT USE DURING PREGNANCY	2 cun lateral to the navel.
ST 34	SuperCharger Point - bleeding and pain along the Stomach Meridian.	2 cun above the lateral superior border of the patella.
ST 36	Master Point - Upper Abdomen and General Energy. Also known as the " Probiotic Point ". Regulates all digestive function including appetite. Regulates and strengthens lung and intestine function. Strengthens immune system. Knee and leg pain or weakness. Lowers stress. DO NOT USE DURING PREGNANCY	In the depression just lateral to the distal aspect of the cranial border of the tibial crest, approximately in the middle of the cranial tibialis muscle.
ST 40	Connecting point for EARTH	2/3 of the distance from the stifle to the ankle (tarsus) in a groove between the bone and muscle.

St 42	Source Point. Muscle wasting, motor impairment, seizures, dental pain, dental problems.	Between the 3rd and 4th metatarsal bones on the front of the hind leg just below the hock.
ST 45	Cold hands and Feet. Constipation. Pain or swelling of the feet and lower leg.	At the base of the nail on the lateral coronary border of the 2nd toe.

Spleen	Indications	Location
SP 1	EMERGENCY POINT - Stop bleeding fast! Bleeding issues, hemorrhage, blood in the urine or stools	In the depression of the nail bed on the dorsomedial aspect of the 2nd digit of the rear foot.
SP 4	Connecting Point for EARTH	In a depression distal and inferior to the base of the 1st metatarsal bone.
SP 6	Master Point - Lower Abdomen and Urogenital System. Tonify Yin and Blood. Digestive disorders. Gynecological and hormonal imbalances. Bleeding disorders.	3 cun directly above the ankle bone on the medial aspect of the leg.
SP 8	SuperCharger Point - bleeding and pain along the Spleen Meridian	3 cun distal to the medial condyle of the tibia.
SP 9	Abdominal pain and distension, diarrhea, edema, jaundice. Pain in external genitalia. Balances body fluids. Triggers stem cell production.	In the depression on the lower border of the medial condyle of the tibia.
SP 13	Hip Dysplasia, hernia, abdominal pain (especially hormonal)	In a depression directly below the ilium (tuber coxae).
SP 21	Flaccid joints and ligaments. Whole body pain (e.g. fibromyalgia). Cough, shortness of breath.	On lateral side of rib cage between the 7th and 8th ribs at the level of the shoulder joint.

Heart	Indications	Location
HT 1	Cardiac, thoracic or chest pain, shortness of breath, anxiety. Frozen shoulder.	On the chest directly opposite the midpoint of the foreleg in a muscle groove.
HT 5	Connecting Point for FIRE (flames). Wrist pain, anxiety, restlessness, sleep disorders.	Lateral aspect of the foreleg, 3/4 of the distance from the elbow to the wrist in the groove between the bone and the tendon.
HT 6	SuperCharger Point - bleeding and pain along the Heart Meridian.	Lateral aspect of the foreleg, 7/8 of the distance from the elbow to the wrist in the groove between the bone and the tendon.
HT 7	Calming & Aspirin Point. Emotional issues, especially affecting sleep. Anxiety with palpitations. Panic. Pounding heart, angina. Used with PC 7 for lowering pulse and upper body pain.	Lateral aspect of the foreleg at the carpus (wrist) in the divot where the bone and tendon meet.
HT 9	Heart attack, stroke, epilepsy, mania. Use IF Pericardium points do not work in case of emergency.	Medial corner of the nail bed of the 5 th toe.

Small Intestine Point #	Indications	Location
SI 1	Any breast disorders; poor lactation, mastitis, cysts. Earache, tinnitus, sore throat. Headache, loss of consciousness, dizziness. Any pain or weakness from little finger up through channel.	On lateral edge of the nail bed of the fifth toe of the fore paw.
SI 4	"Source Point" - Osteoarthritis. Wrist (carpus) and neck pain. Fever and jaundice.	On the lateral of the foreleg at the top of the metacarpal bone of the 5th toe just below the carpus (wrist) joint.
SI 6	SuperCharger Point - bleeding and pain along the Small Intestine Meridian	On the foreleg at the lateral edge of the carpus (wrist) joint in the divot just inside the styloid process of the ulna (wrist bone).

SI 7	Connecting Point for FIRE (flames). Dispels wind and mental fog. Convulsions, fright, fever. Carpal (wrist) pain.	Just under half the distance between the carpus (wrist) and the elbow on the lateral (back) side of the foreleg.
SI 19	Any ear problems, TMJ, toothache. Reduces cravings and appetite. Calms the spirit. Meeting of the SI, TH, & GB meridians.	In front of the tragus of the ear in the depression made when the mouth is opened.

Bladder	Indications	Location
BL 1	All eye issues, optic nerve activation. Sinus headache and congestion.	At the inside corner of the eye socket.
BL 10	Neck pain and stiffness, headache at the base of the head. Cranial lymph congestion.	At the base of the brain stem, just lateral to the spinal cord.
BL 11	Influential Point - Bones. Infections of the superior respiratory tract. Lung and chest congestion, flu, asthma. Thoracic rib pain. Neck and shoulder pain and stiffness. Osteoporosis, arthritis, bone diseases.	1.5 cun lateral to the spinal cord at the level of the first thoracic vertebra (T1). Just medial to the top of the shoulder blade.
BL 17	Influential Point - Blood. Blood imbalances and disorders such as anemia, coughing blood, blood in the stool, menstrual disorders. Supports healthy breathing when experiencing shortness of breath or hiccups. Vomiting, gastric pain, reflux.	1.5 cun lateral to the spinal cord at the level of the seventh thoracic vertebra (T7). Level with the bottom of the shoulder blade.
BL 36	Parasympathetic nerve activation. Lower back pain, sciatica, leg weakness. Reproductive and urination issues.	Just below the ischial tuberosity in the crease of the muscle.
BL 40	Master Point - Lower Back & Legs. Strengthen and tonify the lower back. Back pain. Release and relax tendons. Knee issues.	In the center of the popliteal fossa (diamond-shaped space behind the stifle joint).
BL 54	Hip Point – Hip dysplasia or imbalance, pain or paralysis in the hind limbs, gluteal injury	In the pocket between the head of the femur and the back of the sacrum.
BL 58	Connecting point for WATER	On the lateral side of the hind leg, 2/3 of the distance below the stifle to the hock on the back of the bone.

BL 60	Aspirin Point – used in conjunction with KI 3. Pain and weakness of the lower back, legs, ankles and feet, plantar fasciitis. Neck pain. DO NOT USE WHEN PREGNANT.	In the depression between the end of the fibula and tip of the hock bone (calcaneal tuber).
BL 63	SuperCharger Point - bleeding and pain along the Bladder Meridian	Directly below the anterior border of the hock joint on the lateral side of the hind leg.
BL 67	Breech deliveries. Turn the baby and ease/speed labor. DO NOT OTHERWISE USE WHEN PREGNANT.	On the lateral edge of the nail bed on the 5th (outside) toe.

Kidney	Indications	Location
KI 1	Chronic sore throat, dry mouth. Lower back pain. Night sweats. Heat stroke, urinary incontinence. EMERGENCY POINT: Electrical system reset – seizures, palpitations, mania, rage.	In the center of the plantar surface of the hind paw, at the caudal margin of the large (metatarsal) footpad.
KI 3	"Aspirin Point" – used in conjunction with BL 60. Pain and weakness of the lower back, legs, ankles and feet, plantar fasciitis. Kidney / urination issues. Asthma from kidney deficiency.	In the depression between the end of the fibula and tip of the hock bone (calcaneal tuber) on the medial aspect of the hind leg. Directly opposite and medial to BL 60.
KI 4	Connecting Point for WATER. Breathing difficulties, regulates fecal and urine elimination. Kidney failure, incontinence. Excessive FEAR. Hock pain.	.5 cun distal and dorsal to KI 3, on the medial aspect of the hock joint.
KI 5	SuperCharger Point - bleeding and pain along the Kidney Meridian.	In the depression of the medial side of the heel bone.
KI 27	Core Energy Support. (Tonifies Ancestral Chi) Tight, constricted chest or lungs. Neck or jaw issues. Physical or mental fatigue. Brain fog. Weakened immune system.	On the chest, 2 cun lateral to the ventral midline between the sternum and the 1st rib.

Pericardium	Indications	Location
PC 1	Headache, blurred vision, excess armpit sweat, breast and lactation disorders.	In the 5th intercostal space on the chest just inside the olecranon (elbow).
PC 4	SuperCharger Point - bleeding and pain along the Pericardium Meridian	On the medial aspect of the foreleg, 1/3 of the distance down from the olecranon (elbow) to the carpus (wrist) directly above the bone.
PC 6	Master Point - Heart, Chest, and Upper Back. Connecting Point for FIRE (coals). Regulates the heart & Stomach. Tight or painful chest. Asthma, angina, palpitations, anxiety. Hiccups – relaxes the diaphragm. Nausea, vomiting, gastric pain. Carpal tunnel syndrome. Also known as the " Stress Point ".	In between the tendons of the foreleg, 2 cun above the transverse crease of the carpus (wrist). Directly opposite (medial to) TH 5.
PC 7	Aspirin Point – used with HT 7. Reduce overall pain in upper body. Carpal tunnel syndrome. Hot flashes.	In between the tendons of the foreleg, 2 cun above the transverse crease of the carpus (wrist). Directly opposite (medial to) TH 5.
PC 9	Clearing heat in the heart. Speech disorders (stroke). Restoring consciousness.	At the ventrolateral (bottom) aspect of the nail bed of the 4th toe.

Triple Heater	Indications	Location
TH 1	Benefits the ear and tongue. Dental infections. Heat in the head. Shoulder and forearm pain.	On the lateral edge of the nail bed of the 4th toe on the fore paw.
TH 4	Source Point	In the divot on the radiocarpal (wrist) joint, a
TH 5	Connecting Point for FIRE (coals) - "Lymph Point". Disperses Heat - opens Lymph Drainage. Opens the intestines – constipation. Loss of voice. Throat pain. Tinnitus. Neck, shoulder, and wrist pain.	2 cun above the carpal (wrist) crease on lateral side of the 4th metacarpal bone. Directly lateral to PC 6.

TH 7	SuperCharger Point - bleeding and pain along the Triple Heater Meridian	1/3 of the distance between the carpus (wrist) and olecranon (elbow) in the groove on the lateral aspect of the foreleg.
TH 14	Shoulder Release Point used in conjunction with LI 15.	In the depression just caudal to the shoulder joint.
TH 23	Eye pain and issues. Blurred vision.	In the depression at the lateral end of the eyebrow on the rim of the orbital bone.

Gallbladder	Indications	Location
GB 1	Emotional Balance Point. Optic Nerve activation Point. Headache, eye problems especially blurred vision, dry eye, conjunctivitis.	In the depression lateral to the outer corner of the eye just behind the orbital rim.
GB 20	Headache, migraines. Eye problems especially blurred vision. Blocked ears, colds, and flu. Neck and shoulder stiffness or pain.	At the back of the head, just behind the occipital bone, in a depression between the neck muscles and the cranial edge of the wings of the atlas (C1). Just lateral to CV 16.
GB 21	Shoulder/neck pain or stiffness. Phlegm in the head, throat, or chest. Swollen lymph glands – mastitis. Lactation issues. DO NOT USE WHEN PREGNANT.	In the depression between the spinous process of the 7th cervical vertebrae and the front of the scapula.
GB 25	Toxicity Point. Supports Kidney and benefits abdominal or lower back pain. Urinary tract infections and stones.	On the lateral side of the abdomen, at the tip of the last (13th) rib.
GB 34	Master Point - Ligaments & Tendons. Useful for soft tissue issues anywhere on the body. Sciatica and lower back pain. Knee pain and weakness. Leg cramps. Disorders of the Liver & Gallbladder.	In the depression below and behind the head of the fibula on the lateral side of the leg. Just below the stifle joint, bisecting the side of the leg.

GB 36	SuperCharger Point - bleeding and pain along the Gallbladder Meridian	On the lateral side of the hind leg, 1/3 of the distance below the stifle to the hock joint.
GB 37	Connecting Point for WOOD. Eye diseases, rear limb weakness or paralysis.	On the lateral side of the hind leg, 2/5 of the distance below the stifle to the hock joint in a depression between the muscles.
GB 39	Influential Point for Brain, Bone Marrow and Spinal Cord	3 cun above the hock joint on the lateral edge of the fibula behind the tendon.
GB 40	Source Point. Sciatica, hindlimb disorders. Soft tissue injuries to the lower hind leg.	On the lateral side of the hind leg, in the center of the hock (tarsus) joint.
GB 44	Emergency Point for Shock. Issues with the sense organs (eyes, ears, nose, mouth, tongue) including pain, inflammation, speech disorders, stiff tongue. Migraines.	On the lateral edge of the toenail of the 4th toe.

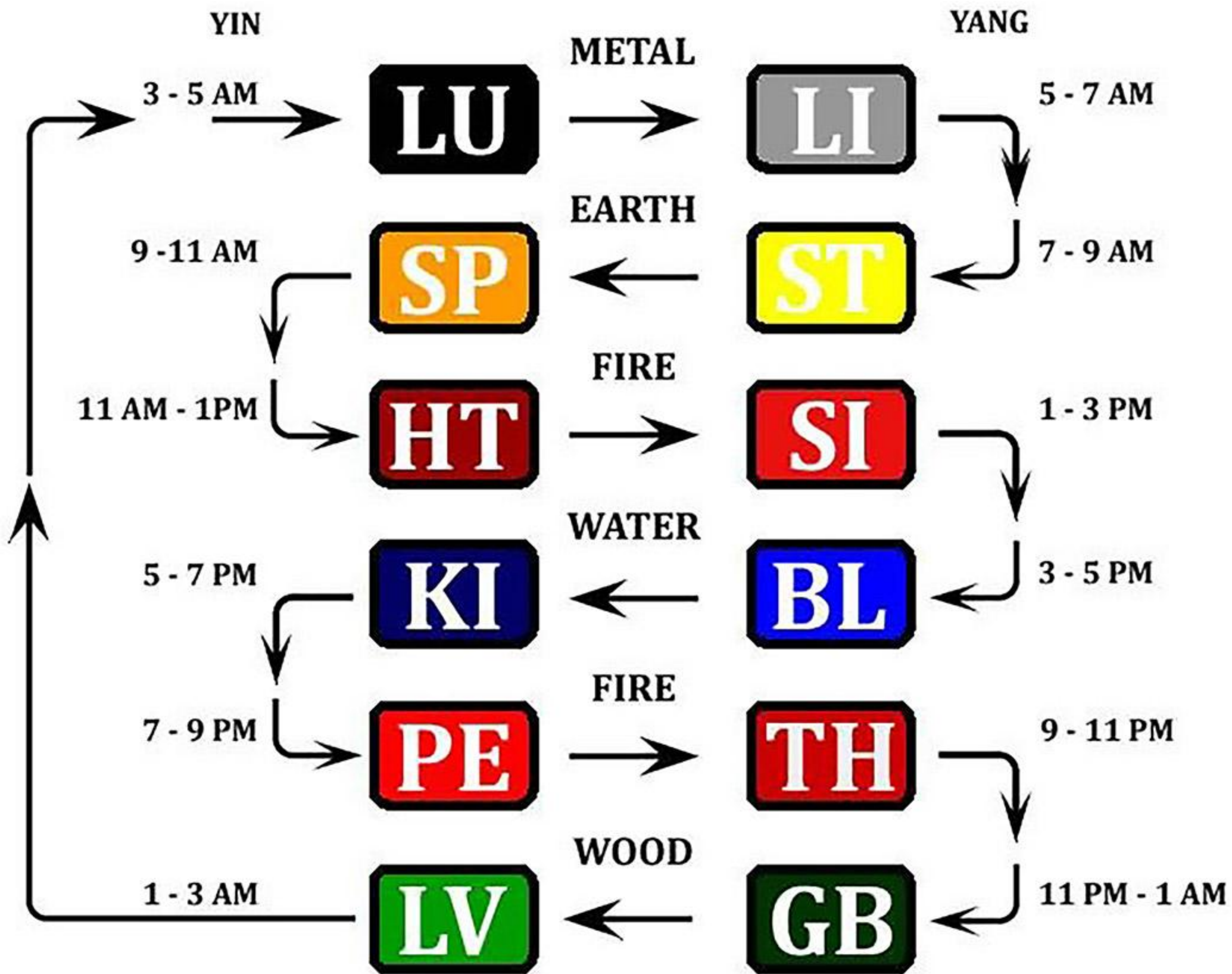
Liver	Indications	Location
LV 1	Regulate the liver. Swollen genitals. Menstrual flow imbalance. Anger, depression.	Lateral edge of the nail bed of the 2nd toe on the hind paw.
LV 3	"Detoxification Point". Calming point for anger and irritability. Used for all liver issues. Distal eye point for all eye issues. Headaches. High blood pressure. Menstrual imbalance and pain. Digestive issues stemming from liver/gallbladder function. Muscle tension.	Above the hind paw, in the center of the cranial aspect of the ankle joint between the 2 nd and 3 rd metatarsal bones.
LV 5	Connecting Point for WOOD. Hearing problems. Dental pain. Mania.	Medial aspect of the hind leg, behind the tibia approximately 5/16ths of the distance above the hock to the stifle joint.

LV 6	SuperCharger Point - bleeding and pain along the Liver Meridian.	Medial aspect of the hind leg, behind the tibia approximately 3/4th of the distance above the hock to the stifle joint.
LV 13	Influential Point - Solid Organs. Pain and distention of the abdomen, vomiting, constipation, diarrhea, bloating, undigested food in the bowels.	On the ventrolateral side of the chest, just below the end of the 12th rib.
LV 14	Regulates the Liver and Gallbladder. Emotional imbalances - anger, depression, irritability. Lactation issues such as mastitis. Pancreatitis and liver problems.	In between the 6th and 7th ribs, even with the mammary line (teats).

Governing Vessel	Indications	Location
GV 1	Rectal and anal issues: hemorrhoids, prolapse, fissure. Diarrhea/Constipation. Lower back pain. Genitourinary disorders. Epilepsy.	In the depression between the anus and the tail.
GV 4	Clear heat from whole body. Strengthen kidneys. Incontinence and kidney disorders. Excess urination. Adrenal fatigue. Lack of sexual vitality.	Between the 2nd and 3rd lumbar vertebrae.
GV 14	Meeting point of ALL Yang meridians. Colds and Flu. High Fevers. Cough, asthma. Opens the pores to increase sweating. Thoracic back pain, neck, and upper back stiffness.	Between the 7th cervical and 1st thoracic vertebrae.
GV 20 - Bai Hui	Headache, dizziness, eye pain, hypertension from excess yang or excess liver. Fatigue, mental fog, seizures. Memory, emotional imbalances, brain disorders, motor control. Revive consciousness.	Indentation at the top of the skull in line with the ear canals.

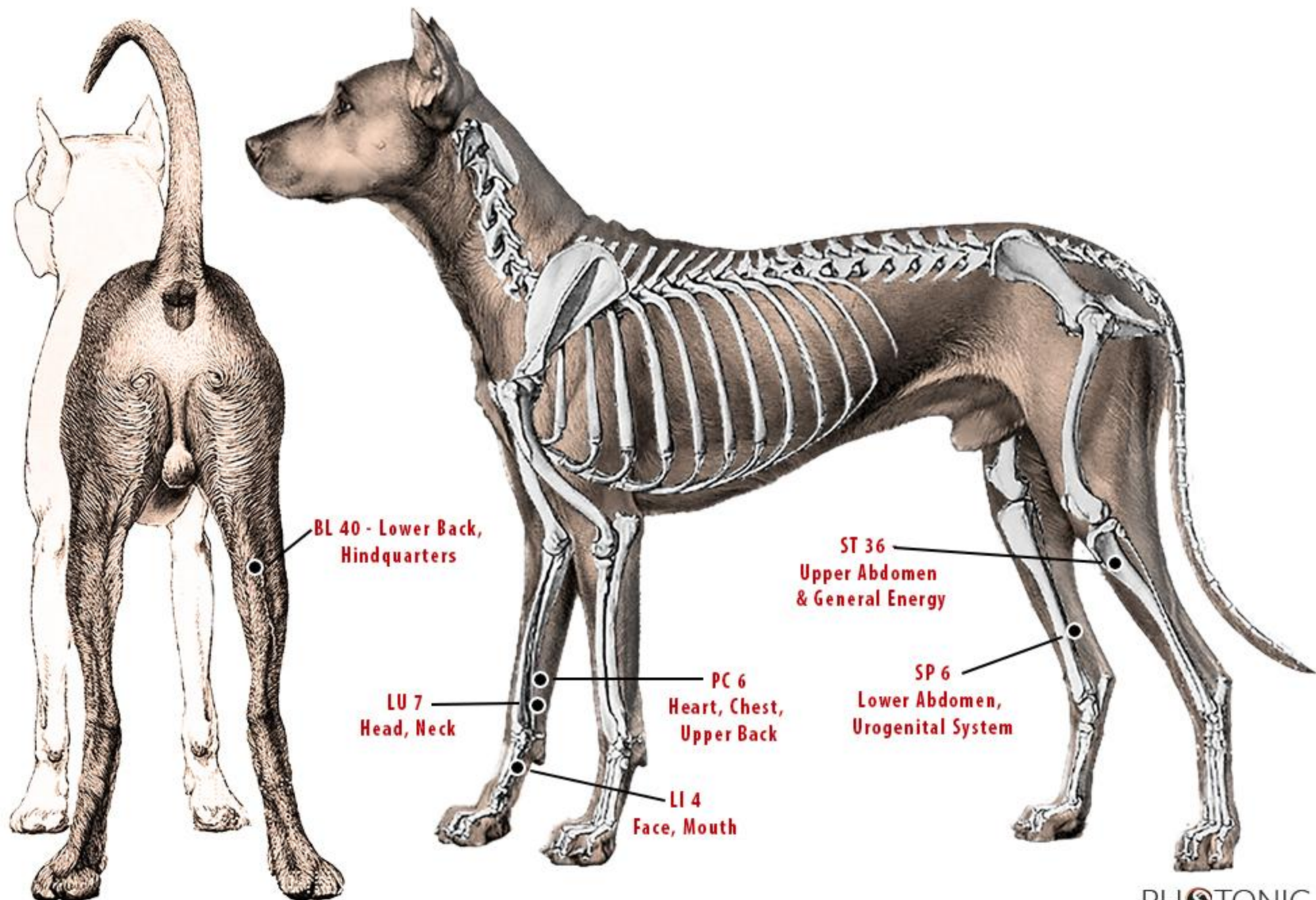
YIN TANG	Headaches, allergies, sinuses, vertigo, heavy sensation in the head, anxiety, insomnia, stress, and eye disorders.	3 rd Eye - in a divot directly between or just above the eyebrows. Special point along GV line.
GV 26/28	Emotional issues such as mania or depression. Pain or swelling of the gums or lips. Nasal issues including polyps, congestion. Neck pain and stiffness.	At the center point between the upper lip and gums. 26 is on the upper lip. 28 is on the gums.

Conception Vessel	Indications	Location
CV 1	Nervous system reboot for drowning, coma, manic depression. Regulates lower yin orifices (genitalia, urethra, anus) - good for all genitourinary issues, genital pain/itching, retention of urine. Irregular menstruation. Hemorrhoids.	On the midline, between the anus and the genitals. Center of the perineum.
CV 6	"Strength" Point - Use for all physical weakness to restore energy. Increases and regulates Chi. Gynecological disorders, chronic dysentery.	On the midline, 1/4 of the distance from the pubic bone to the umbilicus.
CV 12	Influential Point - Hollow Organs. Restores balance to the Stomach & Spleen. Ulcers, acute and chronic gastric pain.	On the midline, midway between the xiphoid process (sternum) and the umbilicus.
CV 17	Influential Point - Energy & Respiration. Calming and Sedation. Guides energy downward. Chronic lung issues. Breast and lactation issues. Chest/throat issues such as difficulty swallowing, hiccups.	On the midline, in line with the 4th intercostal space. Approximately 1/3 of the distance from the sternum to the manubrium (breastbone).
CV 24	Facial pain/paralysis. Dental pain. Speech issues. Dry mouth and thirsting disorders.	In the divot between the chin and the lips.



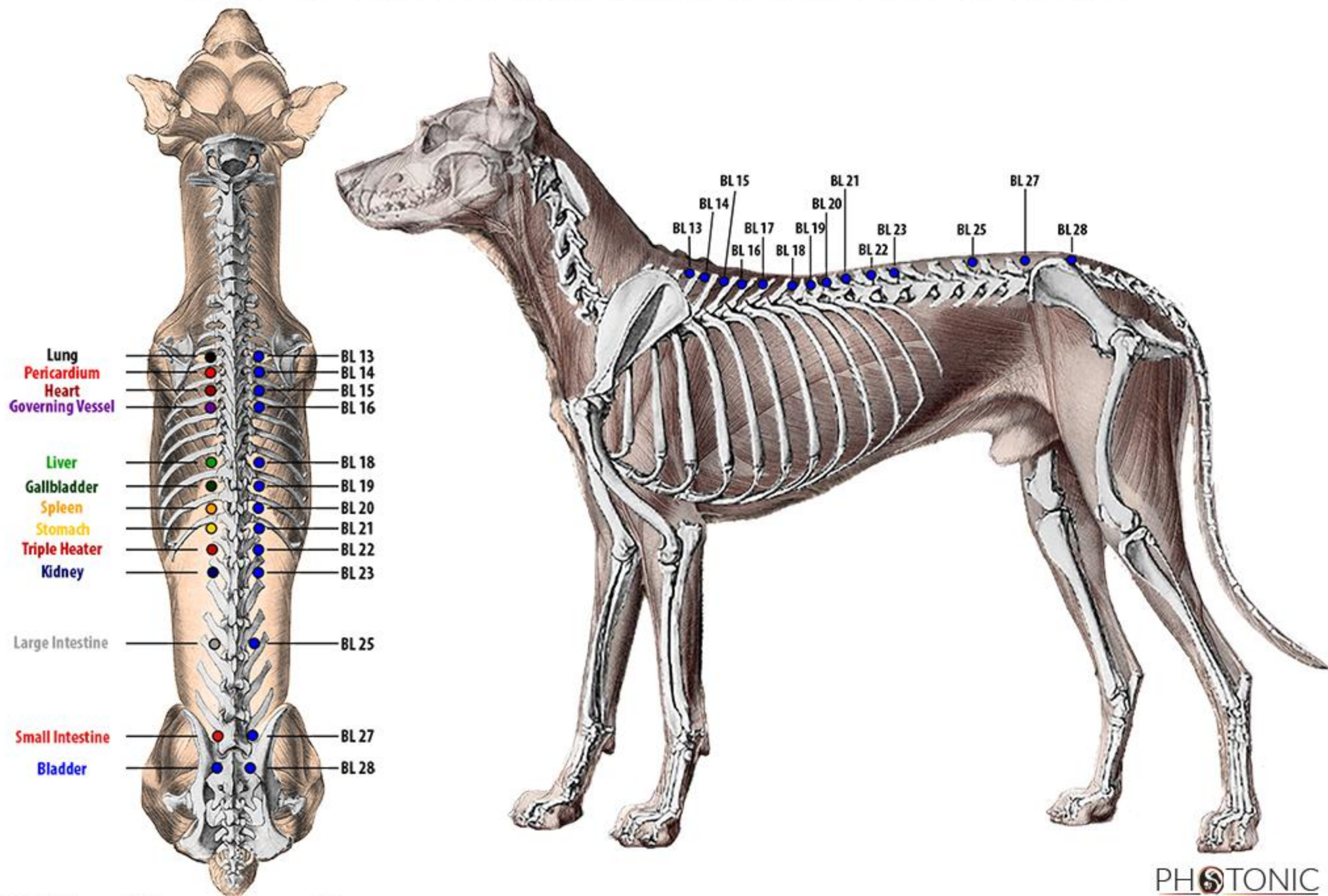
Canine Master Points

6 Points which control an Area of the Body



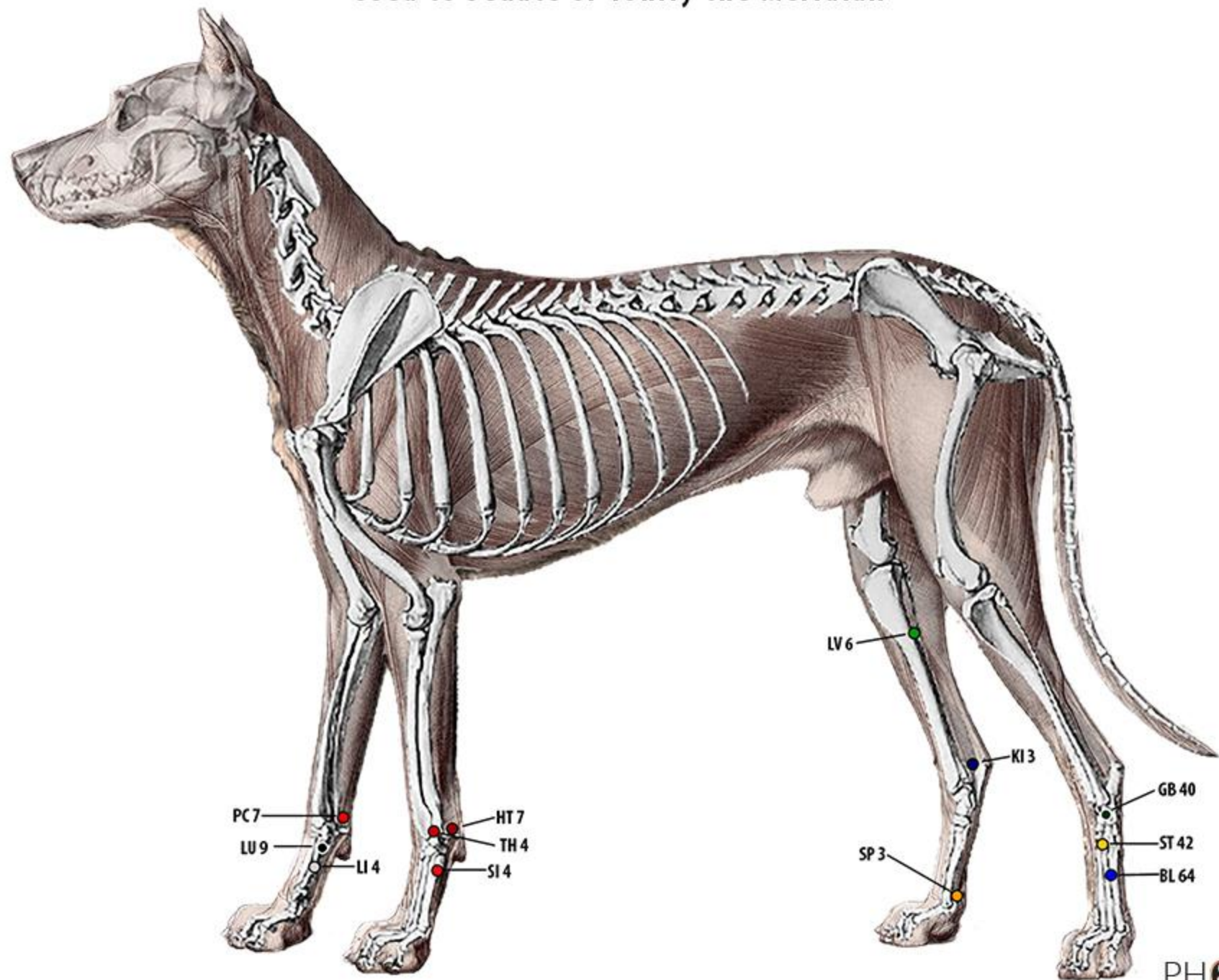
Canine Association Points

Used to Access and Move Energy along the Associated Meridian and Organ



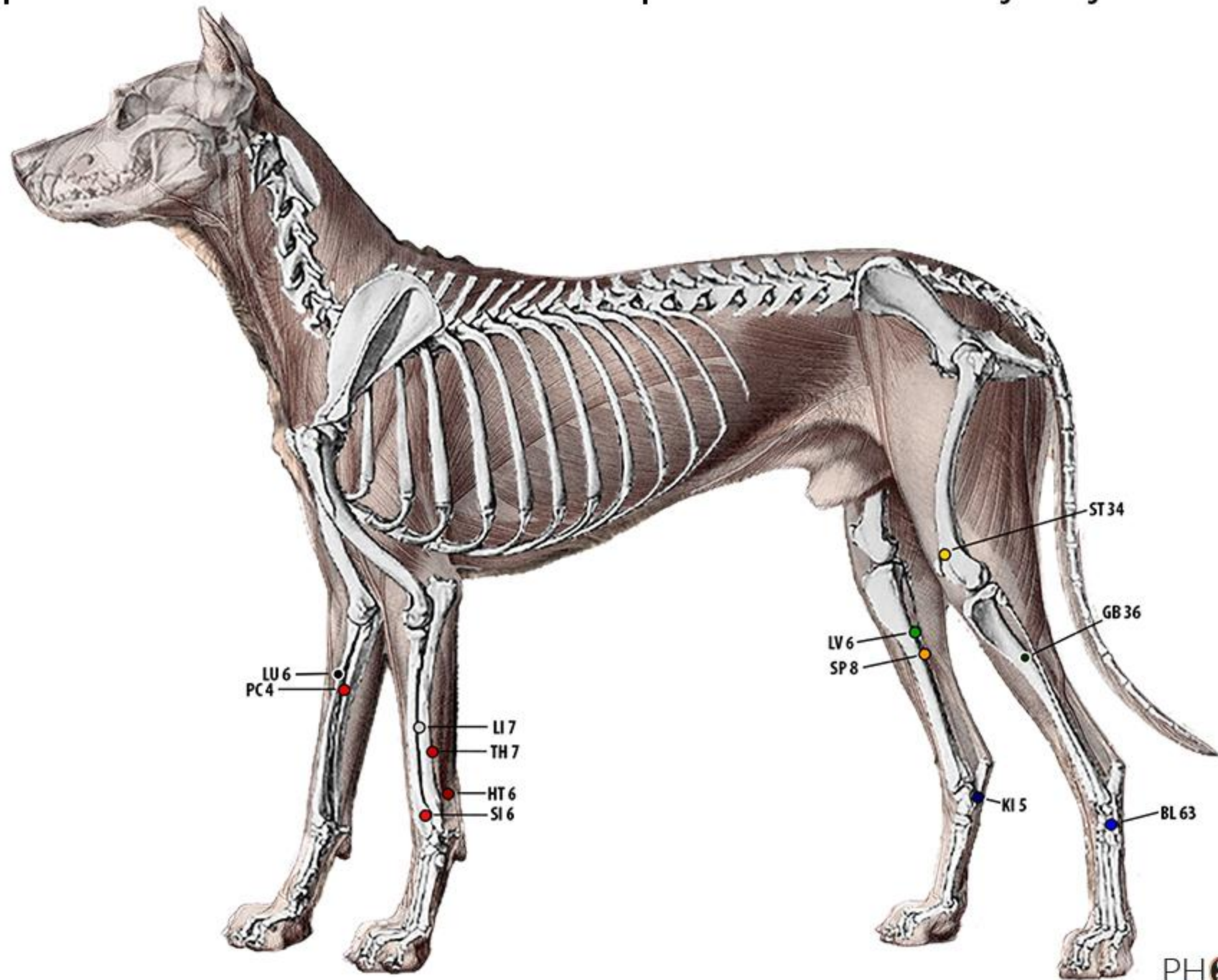
Canine Source Points

Used to Sedate or Tonify the Meridian



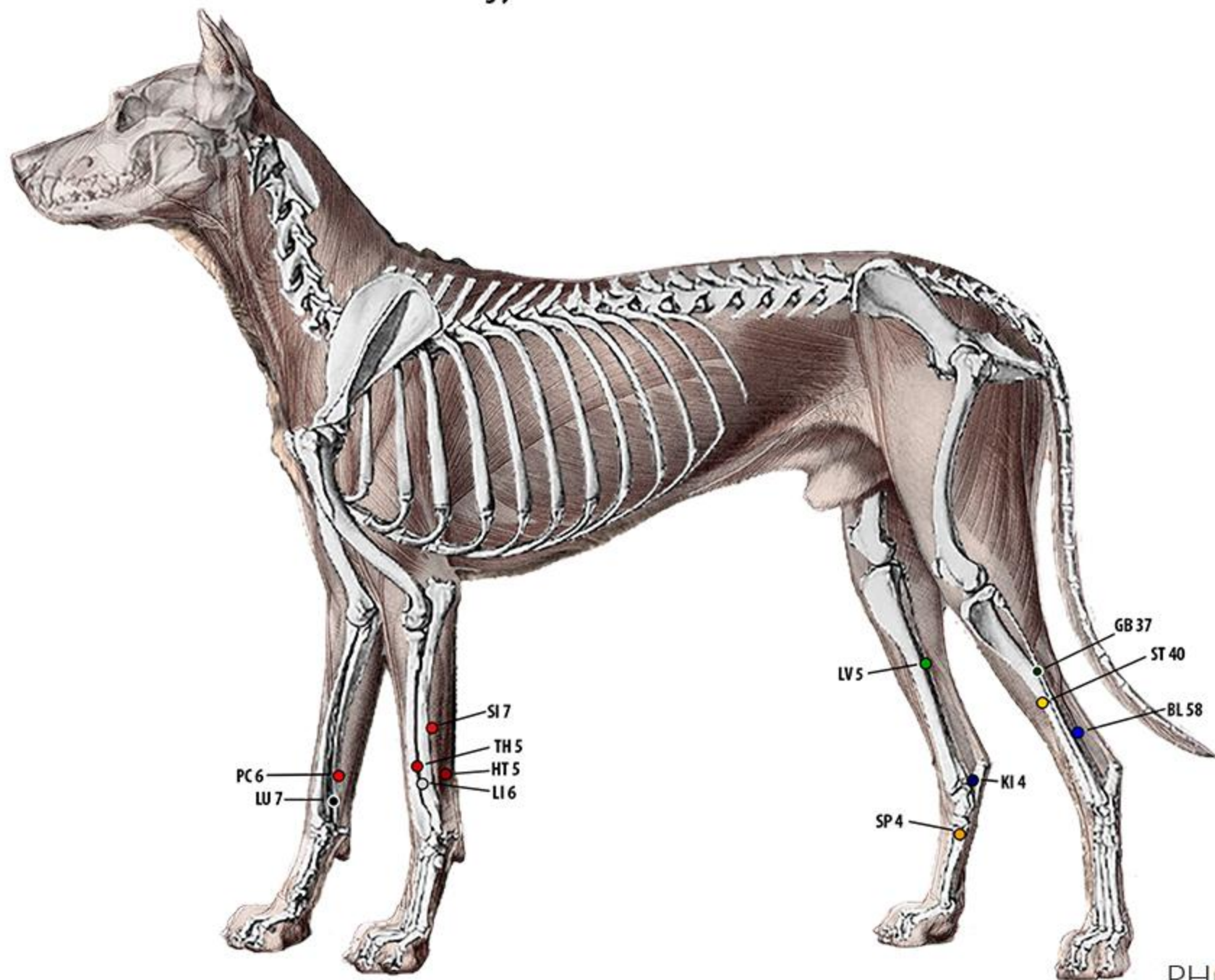
Canine Accumulation - SuperCharger Points

One point on each meridian used to relieve acute pain and staunch bleeding along that channel.



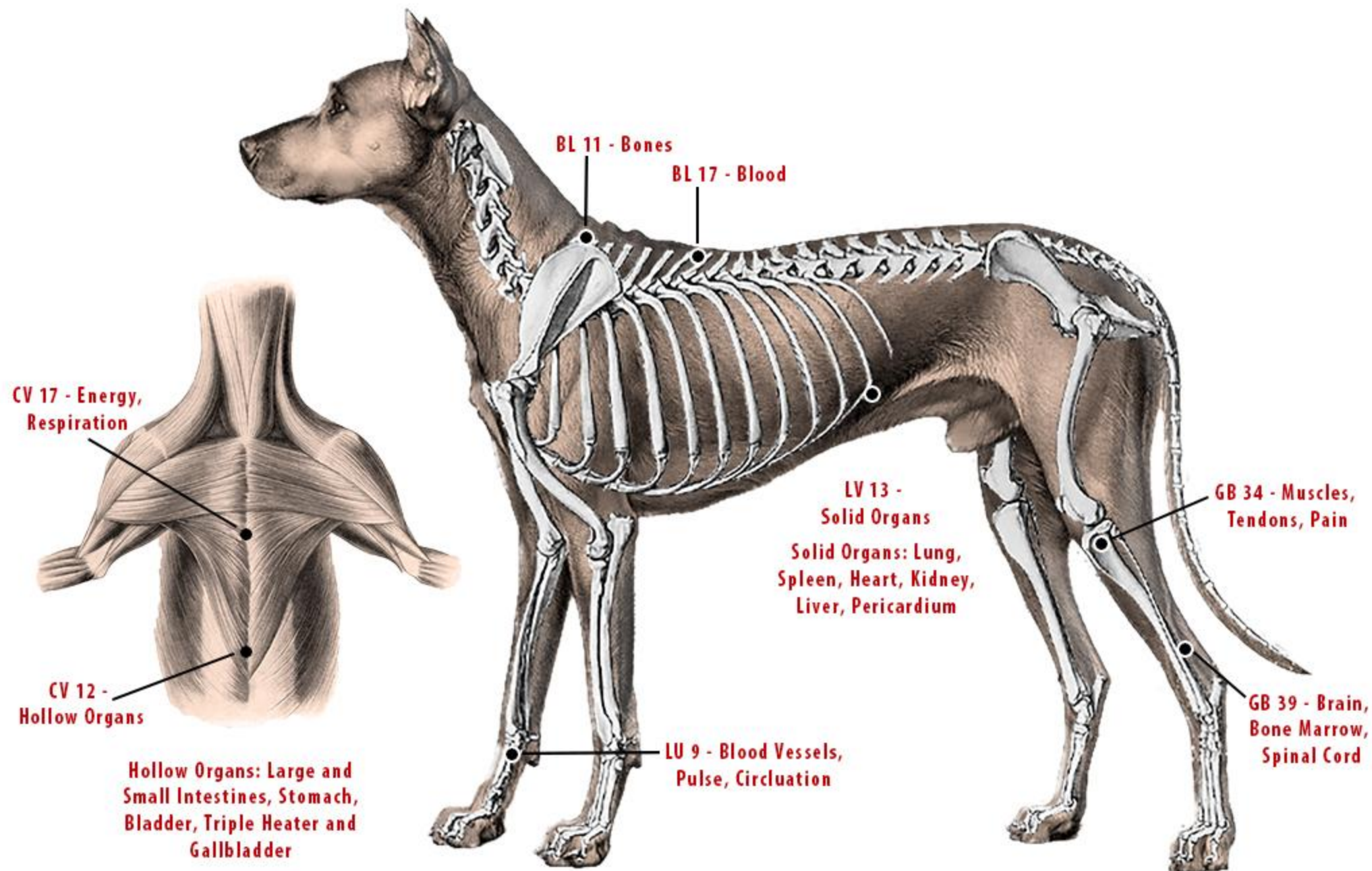
Canine Connecting Points

Used to Balance the Energy Flow between Elemental Sister Meridians



Canine Influential Points

8 Points which Influence a Specific Body Function or System



Canine Ting Points

